

## Planche 82

MO (Figs 1-57): Échelle = 10 µm	Longueur	Largeur	Stries
<p>Figs 1-22: <b><i>Reimeria sinuata</i></b> (Gregory) Kociolek &amp; Stoermer 1987                      Bas.: <i>Cymbella sinuata</i> Gregory 1856  <b>RSIN</b> Valeurs IPS: S=4,8 V=1</p>	11-18	4	11-13
<p>Figs 23-34: <b><i>Reimeria uniseriata</i></b> Sala, Guerrero &amp; Ferrario 1993  <b>RUNI</b> Valeurs IPS: S=5 V=1                      Commentaire: Champs apicaux plus larges que chez <i>Reimeria sinuata</i>.                      Valves plus grandes et stries unisériées bien visibles avec des aréoles bien séparées.</p>	14- 24	5,5-6	8-10
<p>Figs 35-57: <b><i>Rhoicosphenia abbreviata</i></b> (C. Agardh) Lange-Bertalot 1980  <b>RABB</b> Valeurs IPS: S=4 V=1</p>	17-40	5-6,5	14-15

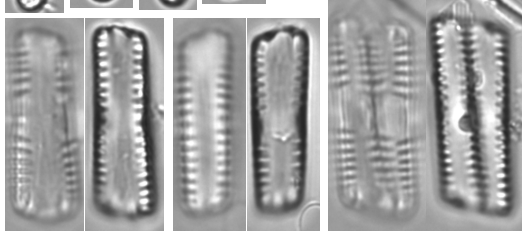
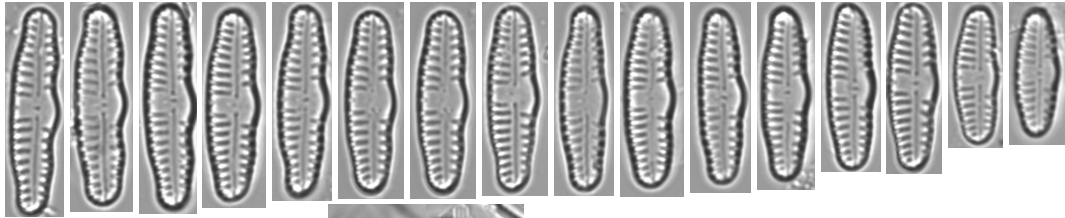
Figs 1-22: Chastillon à Isola - 06210605 - 23.06.98

Figs 23-34: Durance à Sisteron - 06153900 - 18.09.06 - prélèvement ASCONIT

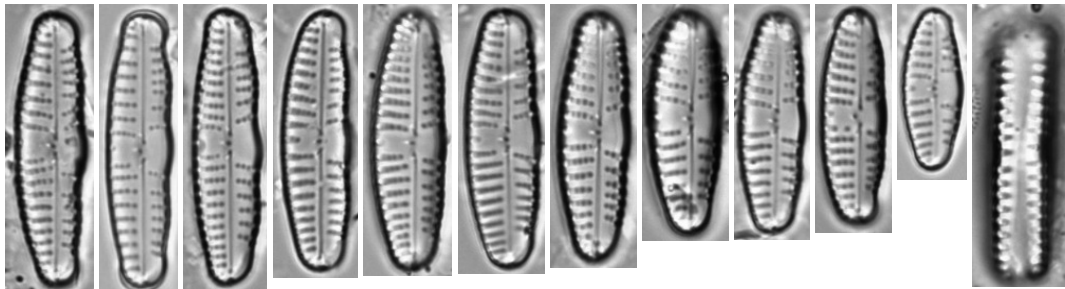
Figs 35-57: Var à Touet sur Var - 06710020 - 29.08.06

Planche 82

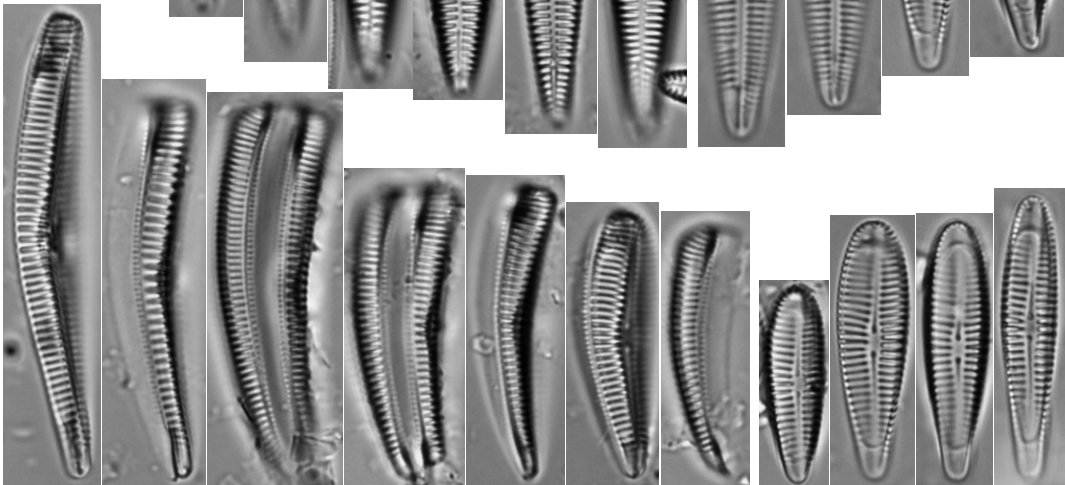
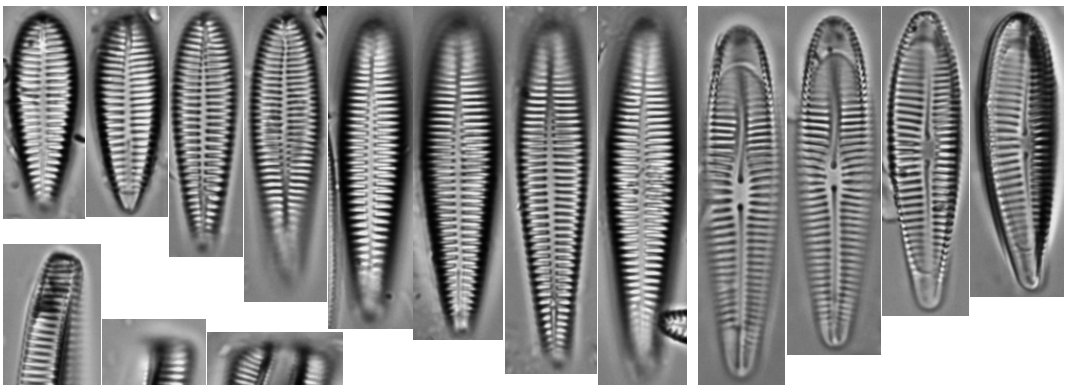
*Reimeria, Rhoicosphenia*



1-22 *Reimeria sinuata*



23-34 *Reimeria uniseriata*



35-57 *Rhoicosphenia abbreviata*