

Planche 19

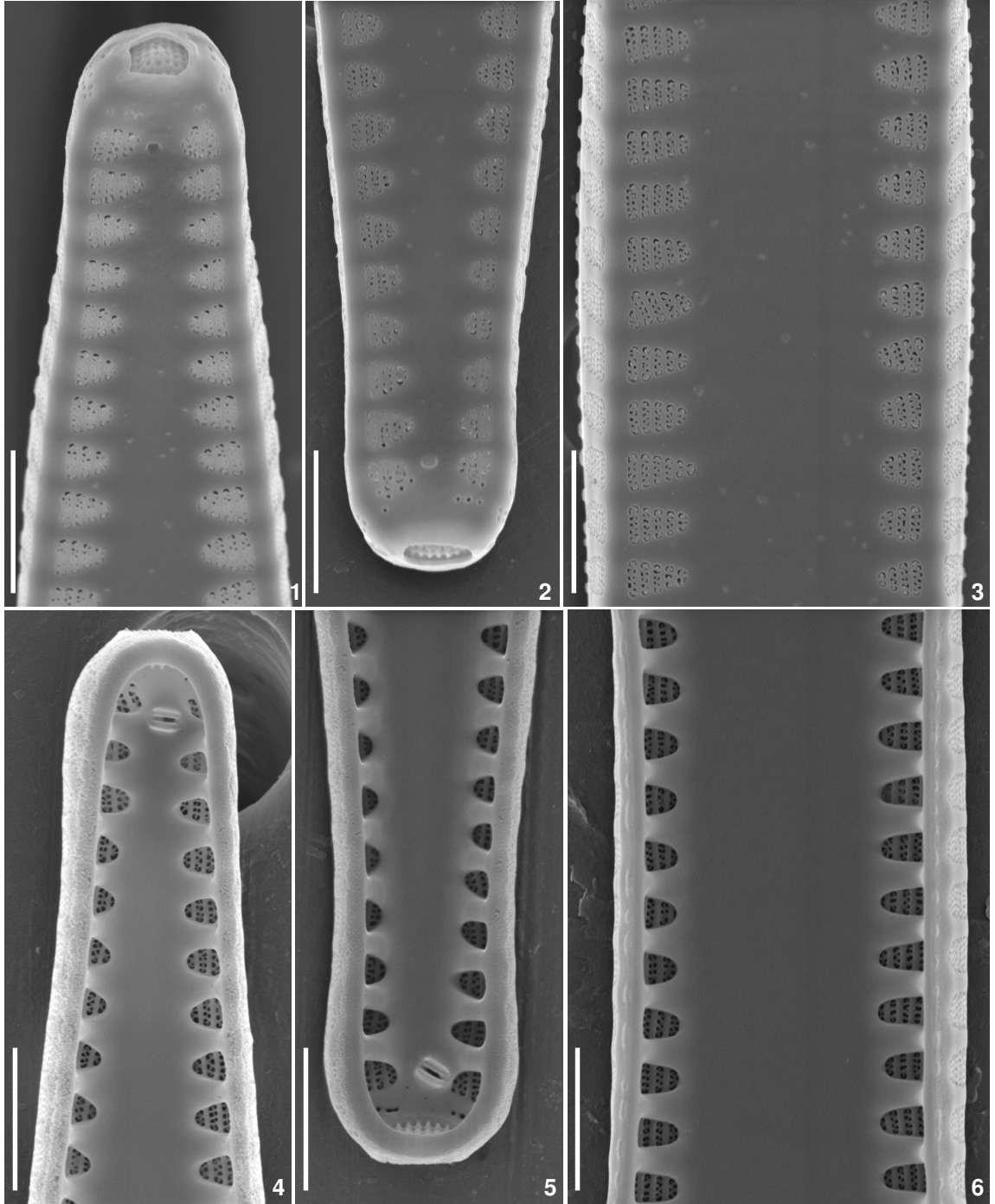
MO (Figs 1-6): Échelle = 10 µm

Figs 1-6: ***Tabularia fasciculata*** (C. Agardh) D.M. Williams & Round 1986
Syn.: *Fragilaria fasciculata* (C. Agardh) Lange-Bertalot 1980
TFAS Valeurs IPS: S=2 V=3

Figs 1-6: Bouillide à Biot - 06209965 - 02.09.03

Planche 19

Tabularia



1-6 *Tabularia fasciculata*